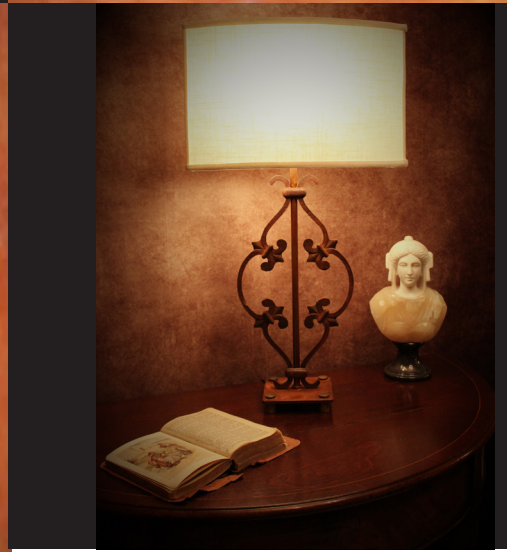
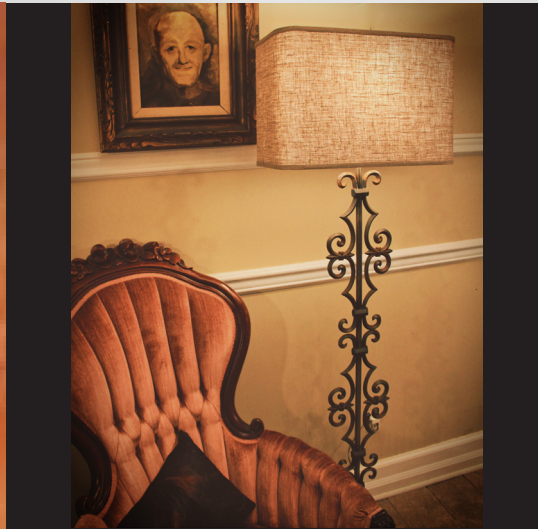




Summer 2018

The Roderick Henri Collection

A Contemporary Reflection of Old World Style; A Calloway's Lamp Collection



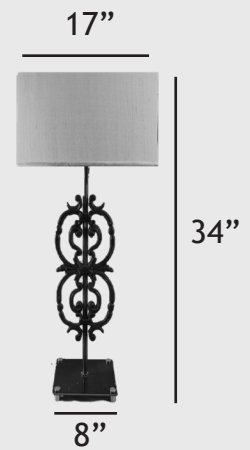
*The
Roderick Henri
Collection*



LeConte

As majestic as the mountain he was named for, LeConte exemplifies old world charm.

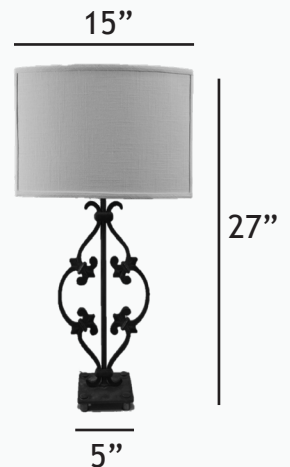
Constructed from steel, iron and brass. Available in oil rubbed bronze, natural rust, natural raw, white wash rust, gold leaf, matte black, unfinished and natural black. LeConte is shown in natural raw with a 1358/523 shade in silver silk.



Marcel

Marcel's creative manner shines through in this innovative design.

Constructed from steel, iron and brass. Available in oil rubbed bronze, natural rust, natural raw, white wash rust, gold leaf, matte black, unfinished and natural black. Marcel is shown in natural rust with a 1358/526 shade in white linen.



Bayard

Bayard's gallant composition is indicative of the knight for which he was named.

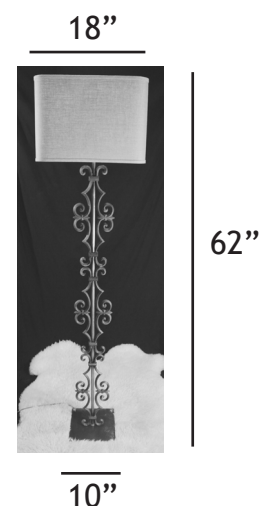
Constructed from steel, iron and brass. Available in oil rubbed bronze, natural rust, natural raw, white wash rust, gold leaf, matte black, unfinished, and natural black. Bayard is shown with a 1358/125 shade in black paper with gold lining.



Aumont

This contemporary style reflects Aumont's entertaining character.

Constructed from steel, iron and brass. Available in oil rubbed bronze, natural rust, natural raw, white wash rust, gold leaf, matte black, unfinished, and natural black. Aumont is shown in natural raw with a 1309/523 shade in natural linen.





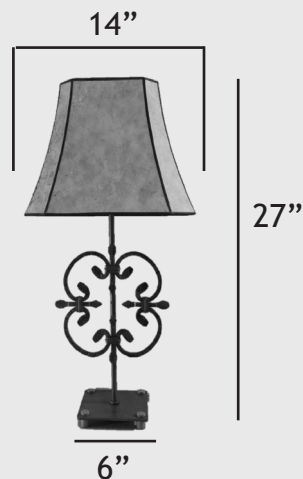




LaFontaine

Much like the words of his namesake, LaFontaine wraps every room in warm romantic light.

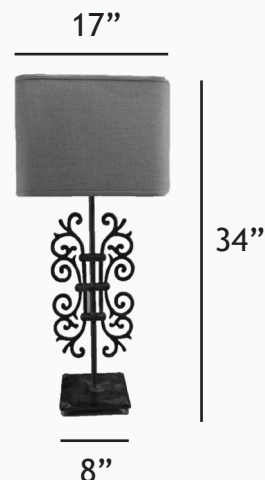
Constructed from steel, iron and brass. Available in oil rubbed bronze, natural rust, natural raw, white wash rust, gold leaf, matte black, unfinished, and natural black. LaFontaine is shown in unfinished with a 39949/Plain shade in platinum micah.



L'Enfant

L'Enfant leaves a lingering impression of refined style.

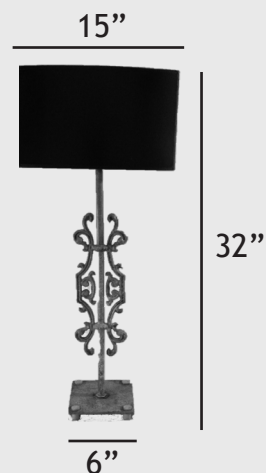
Constructed from steel, iron and brass. Available in oil rubbed bronze, natural rust, natural raw, white wash rust, gold leaf, matte black, unfinished, and natural black. L'Enfant is shown in natural rust with a 1309/526 shade in white linen.



Auriol

The forward-thinking composition of Auriol takes fashion to new heights.

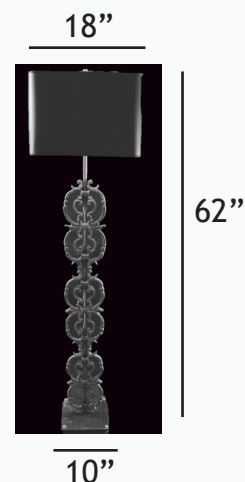
Constructed from steel, iron and brass. Available in oil rubbed bronze, natural rust, natural raw, white wash rust, gold leaf, matte black, unfinished and natural black. Auriol is shown in white wash rust with a 1358/523 shade in black linen.



Giraud

Giraud, just as his namesake once did, exudes confidence and strength.

Constructed from steel, iron and brass. Available in oil rubbed bronze, natural rust, natural raw, white wash rust, gold leaf, matte black, unfinished and natural black. Giraud is shown in natural raw with a 1309/125 shade in black paper with gold lining.





Antoinette

As statuesque and elegant as the woman herself, Antoinette lights up every room she enters.

Constructed from steel, iron and brass. Available in oil rubbed bronze, natural rust, natural raw, white wash rust, gold leaf, matte black, unfinished, and natural black. Antoinette is shown in natural raw with a 1358/523 shade in black linen.



Marceau

Marceau, while silently playful, is as equally artistic.

Constructed from steel, iron and brass. Available in oil rubbed bronze, natural rust, natural raw, white wash rust, gold leaf, matte black, unfinished and natural black. Marceau is shown in white wash rust with a 476/511 shade in beige paper.



Joffre

Proudly decorated, Joffre is indicative of classic European style.

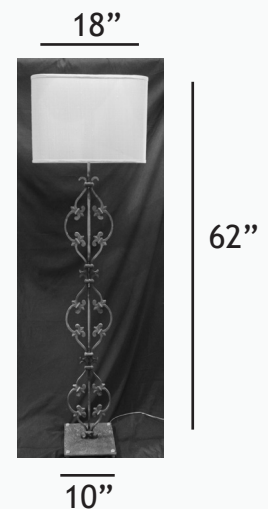
Constructed from steel, iron and brass. Available in oil rubbed bronze, natural rust, natural raw, white wash rust, gold leaf, matte black, unfinished, and natural black. Joffre is shown in unfinished with a 1309/523 shade in natural linen.



Tristan

Named for her altruistic influence, Tristan combines beauty and strength.

Constructed from steel, iron and brass. Available in oil rubbed bronze, natural rust, natural raw, white wash rust, gold leaf, matte black, unfinished and natural black. Tristan is shown in natural raw with a 1309/517 shade in silver silk.







Motier

A name synonymous with loyalty and stylish flare, Motier exemplifies sophisticated class.

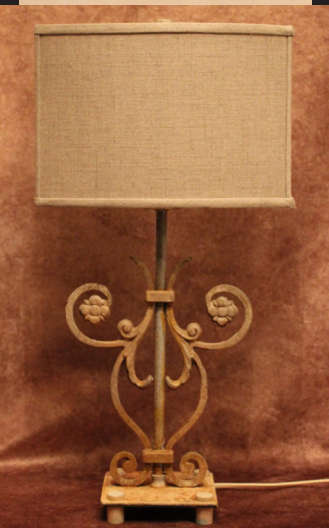
Constructed from steel, iron and brass. Available in oil rubbed bronze, natural rust, natural raw, white wash rust, gold leaf, matte black, unfinished and natural black. Motier is shown in an example custom finish with a 1358/526 shade in white linen.



Bonaparte

Bonaparte personifies the combination of strategic prowess and elegant style.

Constructed from steel, iron and brass. Available in oil rubbed bronze, natural rust, natural raw, white wash rust, gold leaf, matte black, unfinished and natural black. Bonaparte is shown in gold leaf with a 476/511 shade in black paper with gold lining.



Lumier

Lumier's whimsical and charming personality is a welcomed addition to any home.

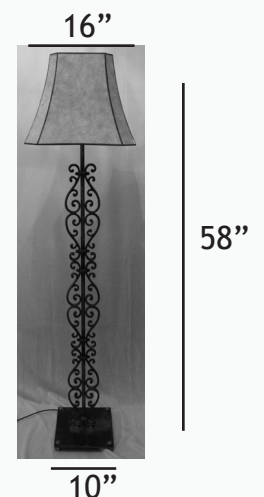
Constructed from steel, iron and brass. Available in oil rubbed bronze, natural rust, natural raw, white wash rust, gold leaf, matte black, unfinished, and natural black. Joffre is shown in an an example custom finish with a 1309/523 shade in natural linen.



Philippe

Flirtatious yet refined, Philippe is as regal as he is royal.

Constructed from steel, iron and brass. Available in oil rubbed bronze, natural rust, natural raw, white wash rust, gold leaf, matte black, unfinished and natural black. Philippe is shown in natural raw with a 39949/platinum mica shade in silver silk.



About the Artist

Roderick Henri Ledbetter is the proprietor of Calloway's Lamp & Shade in Knoxville, TN. As the second generation Ledbetter to carry on the family business, Rod has been creating custom lighting for over 20 years. His passion for quality lighting coupled with sophisticated taste has led him to release his first lamp line, Roderick Henri.

Having had the opportunity to travel abroad both as a buying assistant to his father as well as on deployment as a Marine, he draws his inspiration from various cultures. His contemporary take on old world styles is both artistic and functional while providing a high quality, handcrafted product made in the USA.

Whether you are looking for a stylish lamp to blend in or stand out, we are confident you will find the perfect lamp with Roderick Henri.



Shade Selection



RH Style	Fabric	Color	Size	Top	Bottom	Side
476	511	Beige Paper	12"	5" x 6.5"	8" x 12"	9.5"
476	511	Beige Paper	14"	5" x 7.5"	9" x 14"	10.5"
476	511	Beige Paper	16"	6" x 8"	11" x 16"	12"
476	511	Beige Paper	18"	7" x 9"	13" x 18"	13"



RH Style	Fabric	Color	Size	Top	Bottom	Side
938	517	Silver Silk	8"	7"	8"	6"
938	523	Black or Natural Linen	8"	7"	8"	6"
938	526	White Linen	8"	7"	8"	6"
938	125	Black Paper w/Gold Lining	8"	7"	8"	6"



RH Style	Fabric	Color	Size	Top	Bottom	Side
1309	526	White Linen	11"	5.25" x 11"	5.25 x 11"	7.75"
1309	526	White Linen	13"	6" x 13"	6" x 13"	8.5"
1309	526	White Linen	15"	7" x 15"	7" x 15"	10"
1309	526	White Linen	17"	8" x 17"	8" x 17"	11"
1309	526	White Linen	19"	9" x 19"	9" x 19"	12"
1309	523	Black or Natural Linen	11"	5.25" x 11"	5.25 x 11"	7.5"
1309	523	Black or Natural Linen	13"	6" x 13"	6" x 13"	8.5"
1309	523	Black or Natural Linen	15"	7" x 15"	7" x 15"	10"
1309	523	Black or Natural Linen	17"	8" x 17"	8" x 17"	11"
1309	523	Black or Natural Linen	19"	9" x 19"	9" x 19"	12"
1309	517	Silver Silk	11"	5.25" x 11"	5.25 x 11"	7.75"
1309	517	Silver Silk	13"	6" x 13"	6" x 13"	8.5"
1309	517	Silver Silk	15"	7" x 15"	7" x 15"	10"
1309	517	Silver Silk	17"	8" x 17"	8" x 17"	11"
1309	517	Silver Silk	19"	9" x 19"	9" x 19"	12"
1309	125	Black Paper w/Gold Lining	11"	5.25" x 11"	5.25 x 11"	7.75"
1309	125	Black Paper w/Gold Lining	13"	6" x 13"	6" x 13"	8.5"
1309	125	Black Paper w/Gold Lining	15"	7" x 15"	7" x 15"	10"
1309	125	Black Paper w/Gold Lining	17"	8" x 17"	8" x 17"	11"
1309	125	Black Paper w/Gold Lining	19"	9" x 19"	9" x 19"	12"

Shade Selection



RH Style	Fabric	Color	Size	Top	Bottom	Side
39949	Plain	Platinum Mica	10"	8x6	14x9	
39949	Plain	Platinum Mica	12"	9x7	16x10	
39949	Design	Amber Mica	10"	8x6	14x9	
39949	Design	Amber Mica	12"	9x7	16x10	
39949	Plain	Amber Mica	10"	8x6	14x9	
39949	Plain	Amber Mica	12"	9x7	16x10	



RH Style	Fabric	Color	Size	Top	Bottom	Side
1358	526	White Linen	10"	6" x 10"	6" x 10"	8"
1358	526	White Linen	12"	7" x 12"	7" x 12"	9"
1358	526	White Linen	14"	8" x 14"	8" x 14"	10"
1358	526	White Linen	16"	9" x 16"	9" x 16"	11"
1358	526	White Linen	18"	10" x 18"	10" x 18"	12"
1358	526	White Linen	20"	12" x 20"	12" x 20"	13"
1358	523	Black or Natural Linen	10"	6" x 10"	6" x 10"	8"
1358	523	Black or Natural Linen	12"	7" x 12"	7" x 12"	9"
1358	523	Black or Natural Linen	14"	8" x 14"	8" x 14"	10"
1358	523	Black or Natural Linen	16"	9" x 16"	9" x 16"	11"
1358	523	Black or Natural Linen	18"	10" x 18"	10" x 18"	12"
1358	523	Black or Natural Linen	20"	12" x 20"	12" x 20"	13"
1358	517	Silver Silk	10"	6" x 10"	6" x 10"	8"
1358	517	Silver Silk	12"	7" x 12"	7" x 12"	9"
1358	517	Silver Silk	14"	8" x 14"	8" x 14"	10"
1358	517	Silver Silk	16"	9" x 16"	9" x 16"	11"
1358	517	Silver Silk	18"	10" x 18"	10" x 18"	12"
1358	517	Silver Silk	20"	12" x 20"	12" x 20"	13"
1358	125	Black Paper w/Gold Lining	10"	6" x 10"	6" x 10"	8"
1358	125	Black Paper w/Gold Lining	12"	7" x 12"	7" x 12"	9"
1358	125	Black Paper w/Gold Lining	14"	8" x 14"	8" x 14"	10"
1358	125	Black Paper w/Gold Lining	16"	9" x 16"	9" x 16"	11"
1358	125	Black Paper w/Gold Lining	18"	10" x 18"	10" x 18"	12"
1358	125	Black Paper w/Gold Lining	20"	12" x 20"	12" x 20"	13"

Special shade colors and styles available. Custom lamp finishes also available by request.
Please contact us at Calloways@live.com for details.



Calloway's Lamp & Shade
5714 Kingston Pike Knoxville, TN 37919 865-588-0684 /calloways@live.com
www.callowayslighting.com/RoderickHenri